

Navodila za montažo plisejev Cosiflor VS 2

Zahtevnost



Manj zahtevno

Priporočeno št. oseb za montažo



Potreben čas

5 minut

Pripomočki

Tračni meter, baterijski izvijač,
nastavki, sveder, ročni izvijač, svinčnik.

OPOZORILO PRED MONTAŽO

- Shranite z navodili za vzdrževanje!
- Za montažo uporabljajte samo ročni izvojač in ne električnega.

OPOZORILO ZA ...

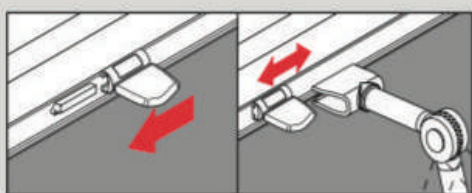
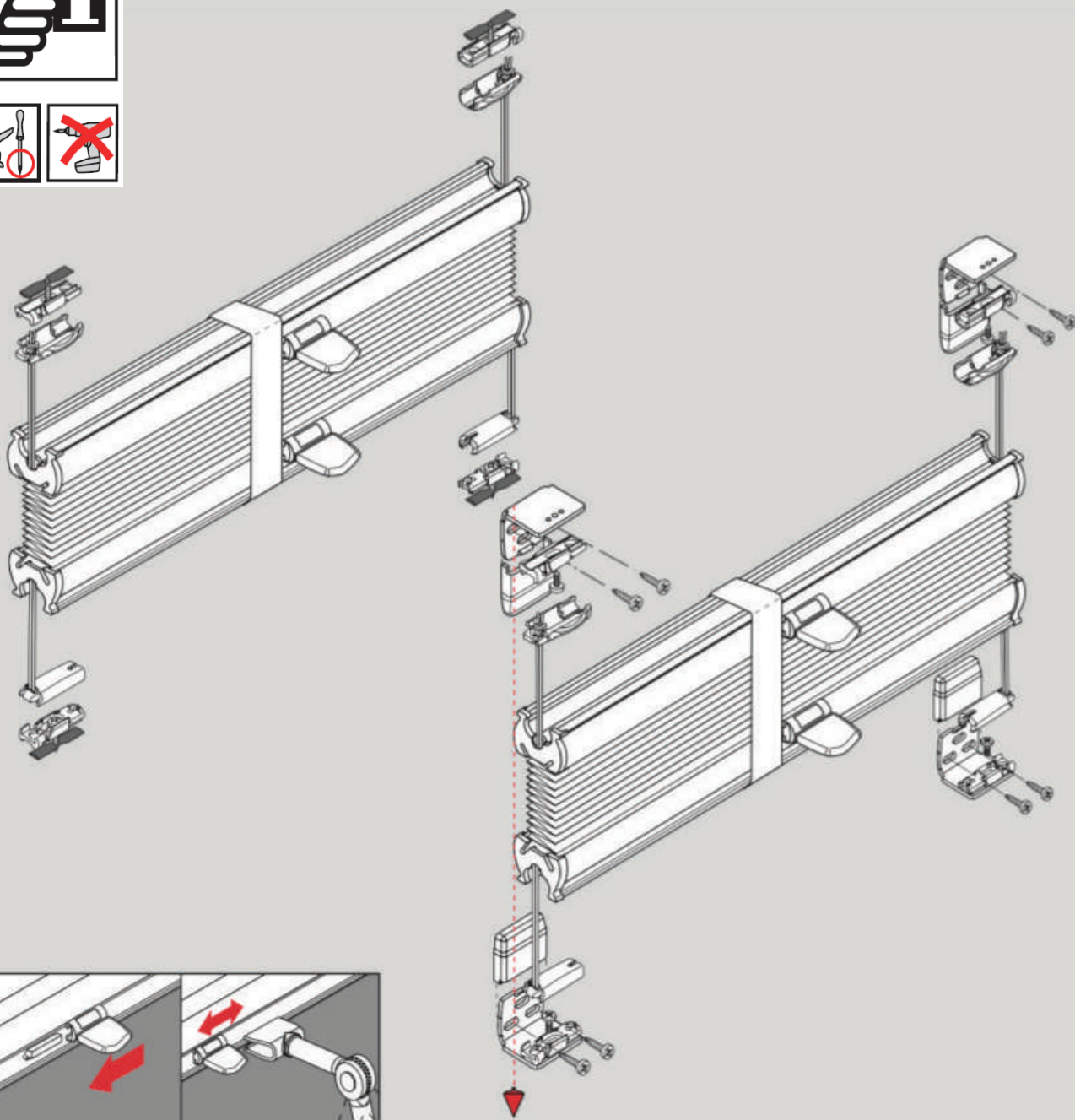
NAROČILA IZ SPLETNE TRGOVINE.

Če ste plise senčilo naročili preko naše spletne trgovine vas prosimo, da **upoštevate navodila za montažo, ki se nahajajo na spletni trgovini**. Do navodil lahko hitro dostopate s skeniranjem spodnje QR kode, če vam naprava tega ne omogoča, pa v brskalnik vpišite povezavo, ki je napisana poleg.

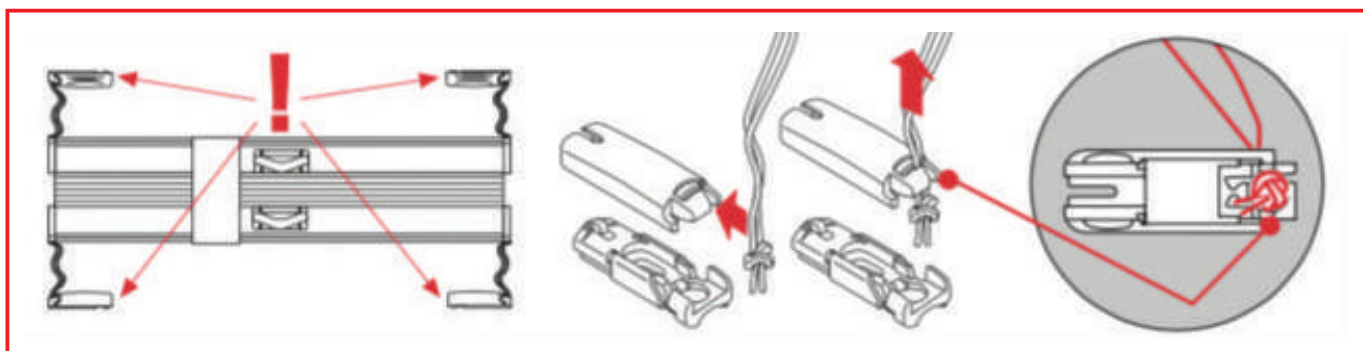


Bodite pozorni, da izberete ustrezno navodilo za montažo pliseja (za vertikalno ali strešno okno).

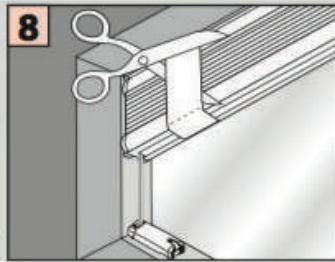
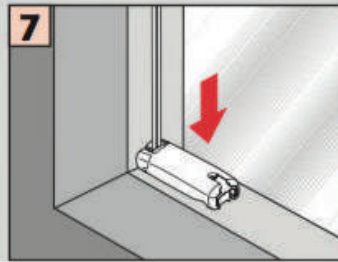
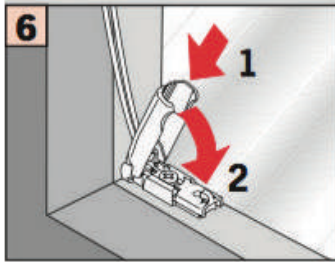
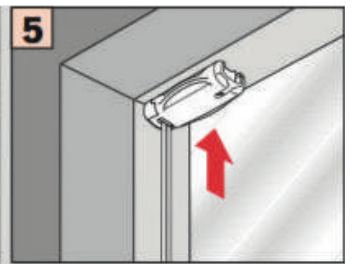
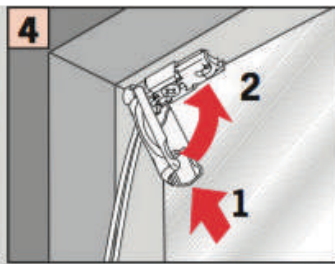
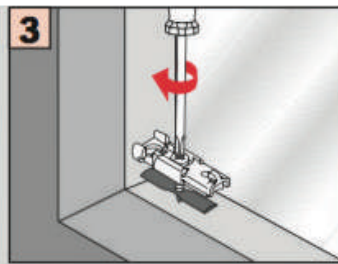
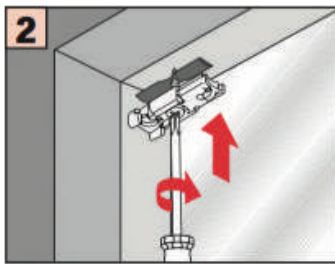
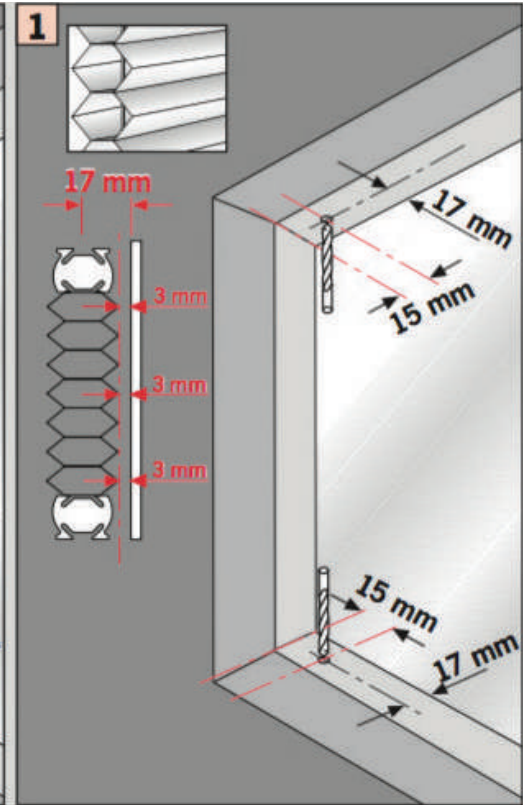
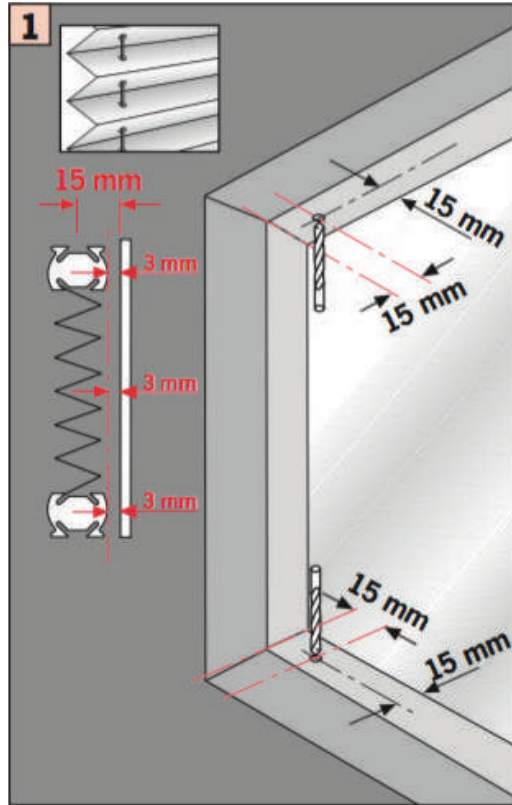
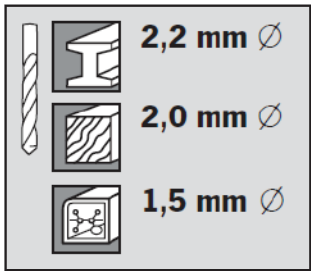
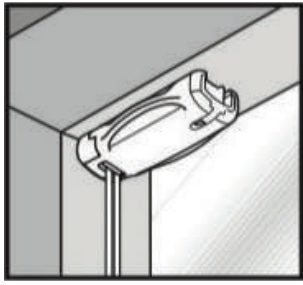
<https://sencila-medle.si/shop/plise>



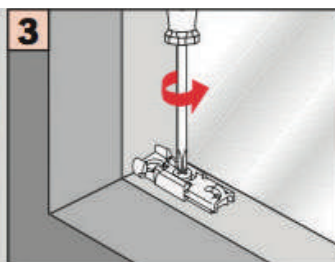
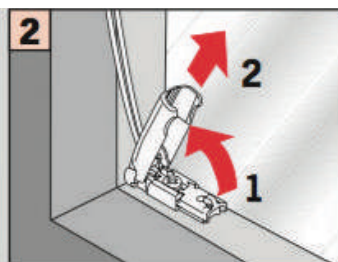
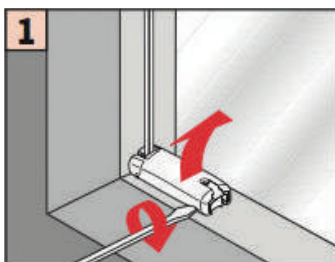
⚠ OPOZORILO



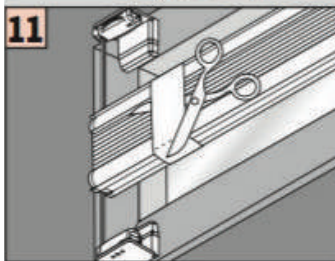
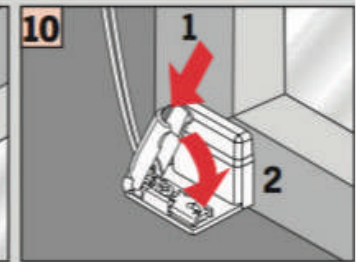
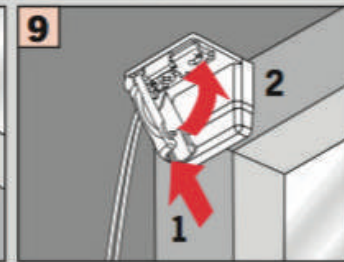
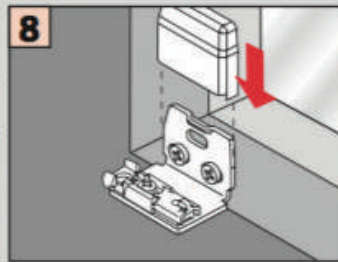
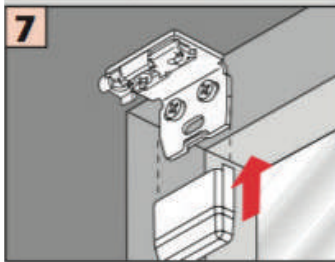
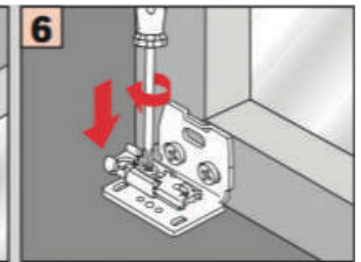
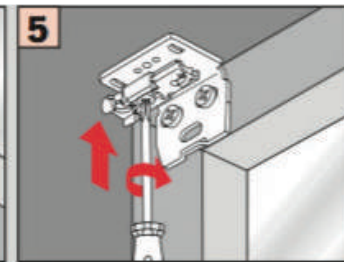
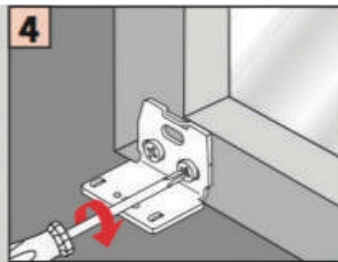
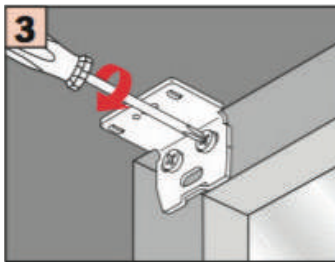
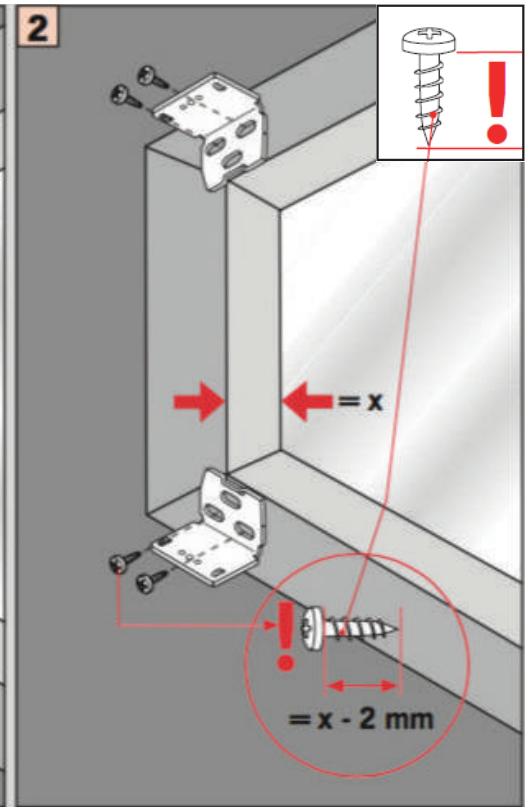
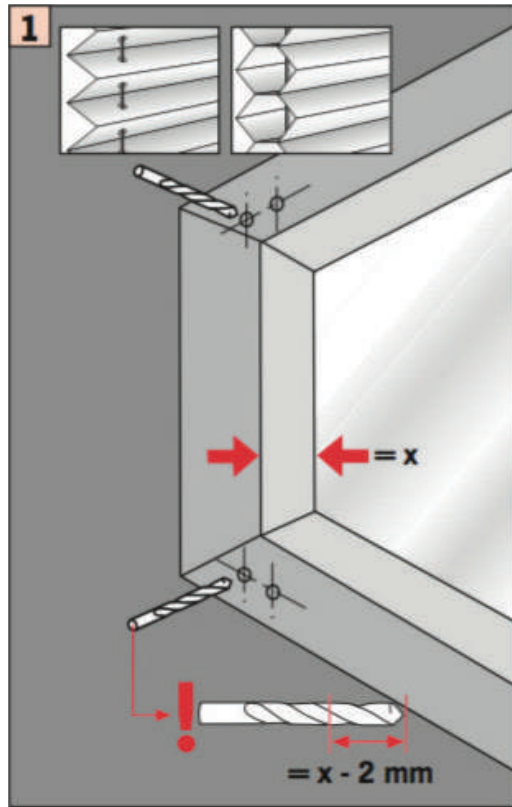
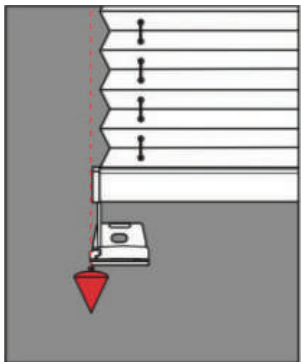
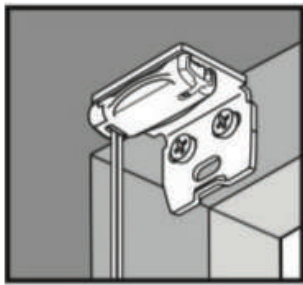
ZGORNJE FIKSIRANJE Top fixing Falzmontage



DEMONTAŽA Disassembly Demontage



STRANSKO FIKSIRANJE Face fixing Winkelmontage



DEMONTAŽA Disassembly Demontage

